

Software Installation Notes

The Drivers and Utilities Disk includes the latest USB device drivers and interface library needed to allow your authorized Digital Imaging Software package to operate properly with the ScanX, ScanX with In-Line Erase, or ScanX Duo with In-Line Erase. It also includes a demonstration program and some diagnostic utilities to help troubleshoot any problems you may encounter.

System Requirements

The Computer System (laptop or computer, monitor, etc.) and any related peripheral or equipment must comply with the requirements for accessory Equipment as specified in the appropriate IEC 601-1 and/or IEC 601-1-1 harmonized national standard.

The minimum computer system requirements necessary to operate the ScanX are listed below:

Operating System: Windows 2000 Professional for an Intel 32-bit processor with Service Pack 4 and the KB 820759 update, or later; or
Windows XP Professional for an Intel 32-bit processor with Service Pack 1 and the KB 822603 update, or later.

USB Port: Must be USB 1.1 or later

Hard Drive: At least 200 MB of free disk space is required to activate the scanner

Peripherals: CD ROM Drive

Image Management Software: Authorized third-party Digital Imaging Software such as Visix is required.

SIS USB Controller Drivers

There are known issues with the device drivers provided by SIS. If you have a SIS USB controller and experience problems operating the ScanX, it is recommended that you disable the SIS device drivers and use drivers provided by Microsoft. Microsoft and SIS are working to resolve these problems.

Installing the Software

NOTE: You must have Administrative privileges in order to install the device drivers, libraries, and other software.

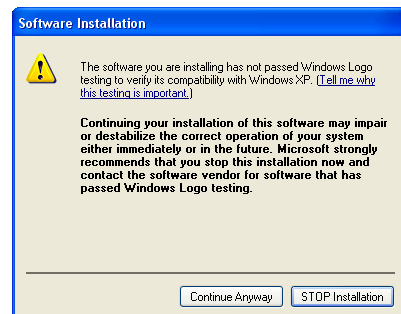
Use the installation program to install the device drivers, the library files, and the ScanX utilities.

The installation program can be started from the menu that automatically starts when the Drivers and Utilities disk is inserted into your CD-ROM player. From the menu, click on “Install the ScanX Drivers and Utilities” to start the installation program.

Alternatively, to start the installation program, double-click on the file named “ScanX ILE Drivers and Utilities.msi” located in the root directory of the disk, typically “D:\ScanX ILE Drivers and Utilities.msi”.

The installation program will give you the option to install the device drivers, the demonstration program, and the diagnostic utilities. During a typical installation, all these features will be installed.

If you choose to install the device drivers, Windows may report that the software has not passed Windows Logo testing. Press the ‘Continue Anyway’ button to complete the installation.



NOTE: The interface library files must be properly installed for your ScanX to operate properly.

The installation program will scan the computer for authorized Digital Imaging Software packages and update their interface libraries. If no authorized Digital Imaging Software package can be located, you will be prompted to identify the installation directory or to install the files in a default location. Contact your Digital Imaging Software package vendor for additional guidance in such cases.

As a final step, the installation program will run the Dynamic Rendering configuration program to allow you to enable or disable Dynamic Rendering of images as they are acquired. See the Dynamic Rendering Configuration Instructions for details on what Dynamic Rendering is and how to configure your Digital Imaging Software package for optimal performance with it.

Loading USB Device Drivers

NOTE: You must have Administrative privileges in order to load the device drivers for the first time.

Please use the installation program to install the device drivers. While the drivers can be loaded from the Drivers and Utilities Disk, installing them with the software guarantees that they are always available when required.

NOTE: The Found New Hardware Wizard may appear the first time the ScanX is plugged into each USB port on the computer.

When you connect your ScanX to the computer and turn it on for the first time, Windows will load the device drivers. If you installed the device drivers with the software, Windows will automatically find them. If you did not install the device drivers with the software, insert the Drivers and Utilities Disk and have Windows search the disk for the drivers.

Windows may report that the device drivers have not passed the Windows Logo testing. Press the 'Continue Anyway' button to allow the installation of the drivers to complete.

The Windows Found New Hardware Wizard will appear three times. Only after it has successfully completed for the third time will your ScanX be ready to operate.

Depending on the peripherals installed on your computer, Windows may need to reboot after loading the ScanX drivers. After rebooting your computer, the ScanX should operate correctly.



Updating the Library

If you install a new or updated version of your Digital Imaging Software package, it may overwrite the interface library with an older or incompatible version. In this case, you will need to update the library files with the newer provided with your scanner. The Library Update Program will take care of this for you.

The Library Update Program can be started from the menu that automatically starts when the Drivers and Utilities disk is inserted into your CD-ROM player by selecting "Just update the library files" from the menu.

Alternatively, run the UpdateLibrary program located in the Update folder of the Drivers and Utilities Disk, typically "D:\Update\UpdateLibrary.exe".

Uninstalling the Software

NOTE: You must have Administrative privileges in order to uninstall the device drivers, libraries, or utilities.

To uninstall the software, run the installation program from the disk and select 'Remove'.

Alternatively, from the 'Start' button, select 'Settings' and then 'Control Panel'. In the 'Control Panel', double-click the 'Add or Remove Programs' icon. In the list of currently installed programs, locate the 'ScanX ILE Drivers and Utilities' and press the 'Remove' button.