



Intraoral Digital Video Camera System

Software Installation Notes

The Drivers and Utilities Disk includes the latest USB device drivers and a demonstration program to help troubleshoot any problems you may encounter.

System Requirements

The Computer System (laptop or computer, monitor, etc.) and any related peripheral or equipment must comply with the requirements for accessory Equipment as specified in the appropriate IEC 601-1 and/or IEC 601-1-1 harmonized national standard.

The minimum computer system requirements necessary to operate the Acclaim Camera System are listed below:

- Operating System: Windows 2000 Professional for an Intel 32-bit processor with Service Pack 4 and the KB 820759 update, or later; or
Windows XP Professional for an Intel 32-bit processor with Service Pack 1 and the KB 822603 update, or later.
- USB Port: USB 2.0 High-Speed, High-Power Port
- CPU 2GHz Pentium-4
- System RAM 256MB
- Display 16MB Video Card supporting 800 x 600 pixels with 32-bit color
- Imaging Software: DirectX9 Compliant streaming video software application.

Installing the Software

NOTE: You must have Administrative privileges in order to install the device drivers and utilities.

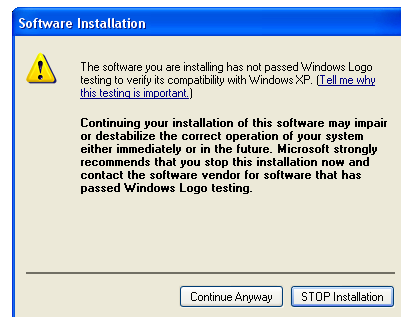
Use the installation program to install the device drivers and, optionally, the utilities.

The installation program can be started from the menu that automatically starts when the Drivers and Utilities disk is inserted into your CD-ROM player. From the menu, click on "Install the Device Drivers and Utilities" to start the installation program.

Alternatively, to start the installation program, double-click on the file named "Acclaim.msi" located in the root directory of the disk, typically "D:\Acclaim.msi".

The installation program will give you the option to install the device drivers and the diagnostic utilities. During a typical installation, all these files will be installed.

While installing the device drivers, Windows may report that the software has not passed Windows Logo testing. Press the 'Continue Anyway' button to complete the installation.



Loading USB Device Drivers

NOTE: You must have Administrative privileges in order to load the device drivers for the first time.

Please use the installation program to install the device drivers. While the drivers can be loaded from the Drivers and Utilities Disk, installing them with the software guarantees that they are always available when required.

When you connect your Acclaim Camera System to the computer and turn it on for the first time, Windows will load the device drivers. If you installed the device drivers using the installation program, Windows will automatically find them. If you did not install the device drivers with the software, insert the Drivers and Utilities Disk and have Windows search the disk for the drivers.

Windows may report that the device drivers have not passed the Windows Logo testing. Press the 'Continue Anyway' button to allow the installation of the drivers to complete.

Depending on the peripherals installed on your computer, Windows may need to reboot after loading the drivers. After rebooting your computer, the Acclaim Camera System should operate correctly.



Uninstalling the Software

NOTE: You must have Administrative privileges in order to uninstall the device drivers and utilities.

To uninstall the software, run the installation program from the disk and select 'Remove'.

Alternatively, from the 'Start' button, select 'Settings' and then 'Control Panel'. In the 'Control Panel', double-click the 'Add or Remove Programs' icon. In the list of currently installed programs, locate the 'Acclaim' and press the 'Remove' button.