

ACCENT

CCD DIRECT DIGITAL INTRAORAL SENSOR

ACCENT CONFIGURATION GUIDE

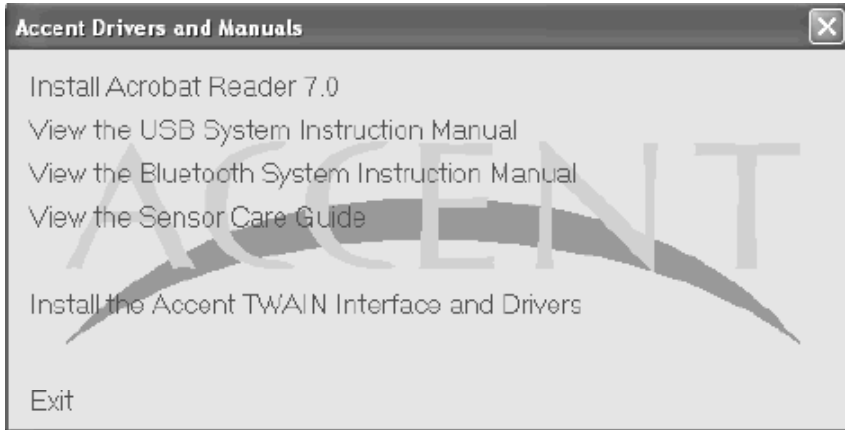
AIR
TECHNIQUES
INC.

ACCENT with Bluetooth

INITIAL SETUP

This procedure teaches Windows about the new Bluetooth device. It must be performed once on each computer that will use the Accent Bluetooth Control Module. Please perform the procedures as follows:

1. Install the Accent TWAIN Interface and Drivers from the Accent drivers disk. Insert the Accent Driver disc; the installation program automatically runs and opens the Accent Drivers and Manuals window shown below.



2. Select **Install the Accent TWAIN Interface and Drivers** from the Accent Drivers and Manuals window and observe that the Accent InstallShield Wizard installer window opens.

A Microsoft® Certification statement may appear. If it does, click **Continue Anyway** to proceed with installation.

3. Select **Next** for all options within the Accent Install Shield Wizard installer to load all the software and drivers. Click **Finish** when done.
4. Insert the Bluetooth Linksys Adapter into the USB slot. Wait for windows to locate and load the adapter automatically.



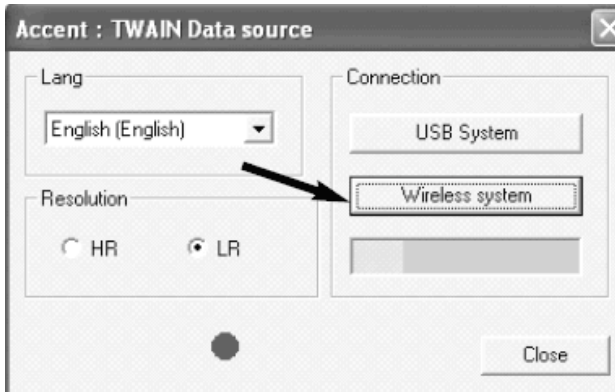
After completing these 4 steps the wizard should have installed a software called TWAIN Test located in **Start / Program Files / Accent X-ray Sensor / TWAIN Test**. This software allows the user to test and take x-rays with Accent without the use of any dental imaging software.

USING ACCENT ON MULTIPLE COMPUTERS

Once the Accent Twain Interface & Accent drivers and the necessary Bluetooth wireless adaptor are installed, establish a working connection between the Accent Sensor and a computer by following the Initial Setup steps above.

USING ACCENT BLUETOOTH WITH A PC

Within your authorized imaging software, go to the window which allows you to acquire images with Accent. Start the acquisition. At this time a window labeled “Accent: Twain Data source” will appear.



Make sure the Accent control module is turned on. Select **Wireless system**. A yellow bar will start to progress to the right, indicating that the wireless adaptor is searching for the Accent Control module. After a few moments you should see the yellow bar turn green (assuming the batteries are charged) and the red circle will change to a steady yellow blinking light. The sensor is now armed and ready for an exposure.

MOVING ACCENT BLUETOOTH TO ANOTHER PC

If the Accent sensor is going to be moved from one room to the next, the handshake/connection at the first location must be terminated before a new connection can be established at the second location. To terminate the handshake/connection on the first computer (PC A) click the **USB System** button on the **Accent: TWAIN Data source** window. Once the handshake/connection at PC A is terminated follow the steps under **USING ACCENT BLUETOOTH WITH A PC** to connect Accent to PC B.

USING TWO OR MORE ACCENT BLUETOOTH WITH TWO OR MORE PC'S

After installing the first Bluetooth Accent, it is easier to install additional Bluetooth Accent's by using windows Bluetooth Devices.

- From the start menu, select the **Control Panel**.
- Within the control panel there will be a Bluetooth Devices icon.
- Open **Bluetooth Devices**, a separate Bluetooth Devices window will appear.
- Under the Devices Tab click the **Add...** button.
- The Add Bluetooth Device Wizard window will appear.
- Turn on the Accent control box and check the box that says: **My device is set up and ready to be found**
- The first Accent should say Already Connected. There should be another Accent listed that says **New device**.
- Click on the **New Accent** and click on **Next**.
- It will then ask you to choose a passkey.
- Choose: **Don't use a passkey**.
- Click **Next**.
- It will then search and connect the device and install it properly.
- Click **Finish** on the Add Bluetooth Device Wizard.

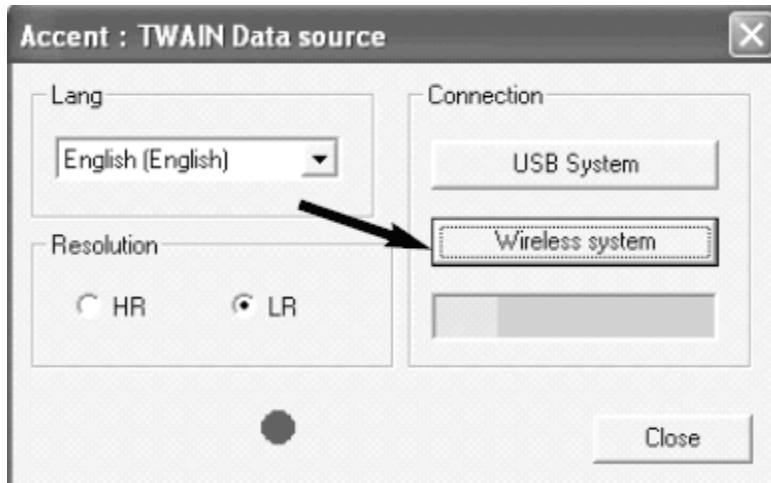
If there are multiple computers that will be using Accent, these computers should follow the same steps and procedures listed above. **If there are multiple computers with multiple Accent sensors, X amount of sensors should be listed in the Bluetooth Devices within the control panel.

ACCENT with Bluetooth

TOGGLING BETWEEN TWO OR MORE ACCENT SENSORS WITH ONE OR MORE PC'S

At this point all Accent control boxes should have been connected and established communication and should be listed in the Bluetooth devices.

Using an Authorized Imaging software launch or select the twain data source (Accent source). Once selected: **Accent: TWAIN Data Source** will appear.



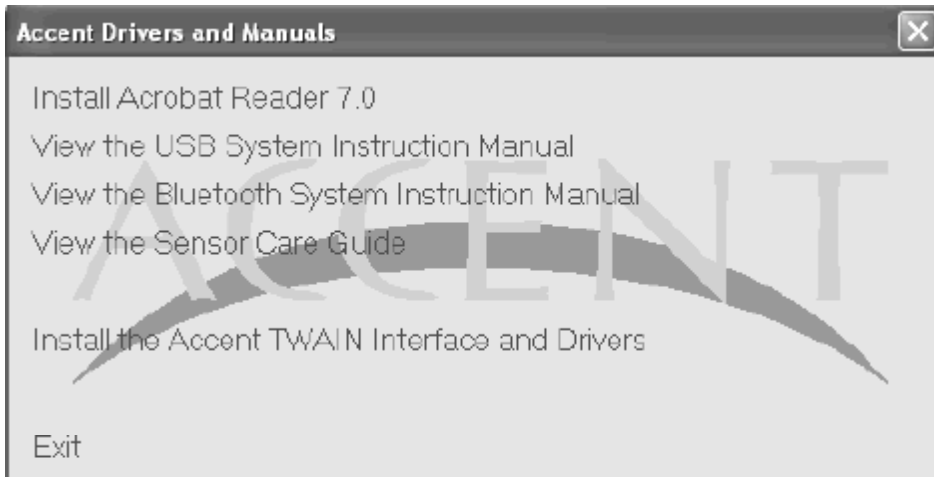
1. Hold down the button on the Bluetooth Accent to turn on. There should be a steady green light blinking indicating that the unit is in standby.
2. Click on **Wireless system**.
3. Wait for the yellow search bar to turn green indicating that you established the handshake/connection.
4. You may now take an exposure.
To switch to a different Accent you must end the handshake/connection.
5. Click on the button **USB System**, this will end the handshake/connection.
6. Turn off the Accent control box.
7. Turn on the new Accent control box.
8. Click on **Wireless system**.
9. Again wait for the yellow search bar to turn green indicating that you established the handshake/ connection.
10. You may now take an exposure.

Always remember to click on **USB System to end the handshake/connection between Bluetooth Accent and the PC. This will ensure that the computer will always be ready to accept the new Bluetooth device and that it is not waiting to regain communication to the one that was lost.**

INITIAL SETUP

These steps must be performed once on each computer that will use the Accent USB Control Module. Perform the procedures as follows:

1. Install the Accent TWAIN Interface and Drivers from the Accent drivers disk. Insert the Accent Driver disc, the installation program automatically runs and opens the Accent Drivers and Manuals window shown below.



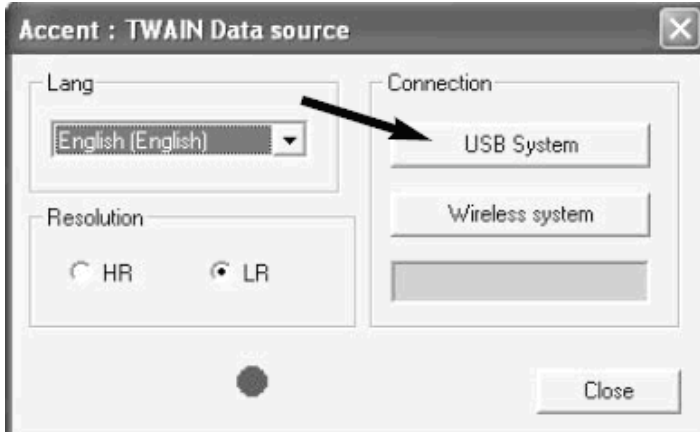
2. Select **Install the Accent TWAIN Interface and Drivers** from the Accent Drivers and Manuals window and observe that the Accent InstallShield Wizard installer window opens.
3. Select **Next** for all options within the Accent InstallShield Wizard installer to load all the software and drivers. Click **Finish** when done.
4. Plug the USB cable into the Accent and the computer.
5. The new found hardware wizard will appear.
6. The wizard will ask: **Can Windows connect to Windows Update to search for software?**
Select: **No, not at this time**
7. The wizard will explain the type of device that you are installing; Accent X-ray Sensor System (USB 2.0)
8. Select: **Install the software automatically (Recommended)** & Insert the Accent Drivers and Utilities Disk.
Note: A Microsoft® Certification statement may appear. If it does, click **Continue Anyway** to proceed with installation. **Make sure you select Continue Anyway!** The wizard will then have completed the installation process for Accent X-ray Sensor System (USB 2.0). Click on **Finish** to close the wizard.

After completing these 8 steps the wizard should have installed software called TWAIN Test. You should be able to locate this in **Start / Program Files / Accent X-ray Sensor / TWAIN Test**. This software should allow you to test and take x-rays with Accent without the use of any dental Authorized Software Vendor.

ACCENT USB

USING USB ACCENT ON 1 OR AS MANY PC'S AS YOU LIKE

Within your authorized imaging software, go to the window which allows you to acquire images with Accent. Start the acquisition. At this time a window labeled “Accent: Twain Data source” will appear.



Now click on the USB System button and the red circle will turn to a steady yellow blinking light on the TWAIN Data source window. You can now proceed to take an x-ray.

Follow the 8 Initial Setup steps on page 5 on all computers that will be using Accent USB.

RECOMMENDED SOFTWARE FILTERS FOR ACCENT

Various imaging software have different filters available for image processing. Some software allow this process to be automated, others are slightly more manual. Below is a list of software for which default filters have been established. Please consult your imaging software provide for assistance configuring or changing these settings.

AUTOMATIC FILTERING SOFTWARE

- **Visix:** After selecting a patient go to the Accent acquisition window. Select “Setup” button and configure the 1.2.3 Setup filters as follows:
Edge=High, Smoothing=Medium, Contrast=0, Brightness=0, Greyshift=79.
- **Image FX:** Within image FX there are 2 different ways to filter an image. The manual filters provide a better image.
 1. Automatic Filters:
Go to Capture / Setup / Scanner (Tab). Make sure Accent is selected as Source. Click on **Automatic Image Processing**. Set Noise Reduction to 100% and Focus to 127.
 2. Manual Filters:
From the Xray Evaluation window select **Image**, then **Edge Definition**. Set Percent to 100% and Area to 40.
- **Patient Gallery** Filters can be setup through Twain, or Accent Integration. Both can be applied automatically
 - TWAIN: Go to Capture / Setup / Select channel and set to Twain Device / Click **Device Setup** then **Enhancement**. Set **Noise** to **Low** and **Edge Enhancement** to **High** Click **Apply**
 - ACCENT INTEGRATION: Go into integration window and select **Capture / Configuration** Set **Noise** to **Low** and **Edge Enhancement** to **High**. Click **Apply**
- **TigerView:** First select a patient, then go to the Accent acquisition window. Press the **Setup** button and configure the 1.2.3 Setup filters as follows:
Edge to **High**, **Smoothing** to **Medium**, **Contrast** to **0**, **Brightness** to **0**, **Greyshift** to **79**.

MANUAL FILTERING SOFTWARE

- **Adstra Imaging:** After acquiring the image go to the “X-Ray” tab on the right-hand side of the screen and select the button for “Extra Sharp”. Adjustments to the contrast and brightness will be at the user’s discretion.

ACCENT

www.airtechniques.com

**AIR
TECHNIQUES**
INC.
www.airtechniques.com

1295 Walt Whitman Road, Melville, NY 11747-3062
516-433-7676 / Fax 516-433-7684
Toll free in the U.S. and Canada 1-800-AIR-TECH
www.airtechniques.com